



Single Phase Transformers



Three Phase Transformers



Power Transformers

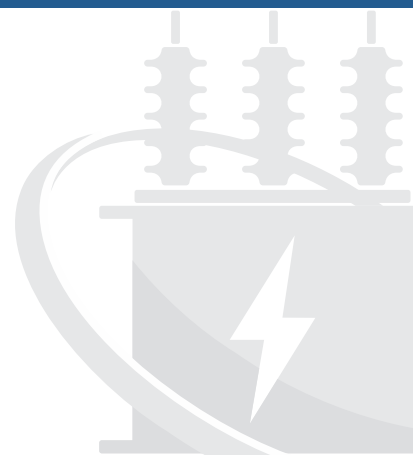


Current & Voltage Transformers

SHRI KRSNA SUDARSHAN URJA

MANUFACTURERS OF
POWER & DISTRIBUTION TRANSFORMERS
CTPT COMBINED UNITS
CURRENT & VOLTAGE TRANSFORMERS

www.shrikrnsa.com





URJA

About the company

Shri Krsna Sudarshan Urja Pvt. Ltd is a manufacturing house with facility at Sitapura Jaipur and an upcoming facility at Newai, Rajasthan. We have dedicated staff for designing, quality, testing, production, sales service. We have a capacity of making 2000 single phase transformers, 1000-1500 three phase transformers and 300 CTPT combined units in a month.

Mission

- ✦ To provide Products to our Customers which are Sturdy, Durable, Safe and Economical
- ✦ To continuously upgrade the Specifications, Quality and Affordability of the products in line with Customers' needs
- ✦ To provide On-Time Delivery of products & On-Time After Sales Service
- ✦ To provide trouble-free experiences for our customers

Vision

- ✦ **Innovation:** Continuously upgrade Products, Processes, Raw Materials used, Testing Procedures and Specifications of the Products.
- ✦ **Quality:** To regularly upgrade quality and reliability using our experience and knowledge
- ✦ **Trust:** Gaining and retaining trust of our customers by adhering to our commitments, giving On-Time delivery and proper after sales service. Retaining the trust of all stake holders including employees, suppliers and associates.
- ✦ **Value:** Our products, and also our service, should not only be of ever improving quality, but also be economical and provide **true value** to the users
- ✦ **Pride:** Dedicate ourselves to doing purposeful work and make meaningful contribution to society.

WE ARE MANUFACTURING

- ★ **POWER TRANSFORMERS**
upto 10MVA 33KV
- ★ **CURRENT TRANSFORMERS**
upto 33KV
- ★ **VOLTAGE TRANSFORMERS**
upto 33KV
- ★ **CTPT COMBINED UNITS**
upto 33KV
- ★ **DISTRIBUTION TRANSFORMERS**
upto 2.5MVA 33KV
 - Single phase Transformers upto 100KVA
 - Three Phase Transformers upto 2.5MVA
- ★ **DRY TYPE TRANSFORMERS**
upto 1000KVA 11KV



POWER TRANSFORMERS

3.15 MVA to 10 MVA (33/11 KV)

Technical specifications:

Rating: Upto 10 MVA , 33 KV Class

Applicable standards: IS, IEC, BEE, DIN etc.

Winding material: Copper

Primary voltage: 3.3KV, 6.6KV, 11KV, 22KV, 33KV

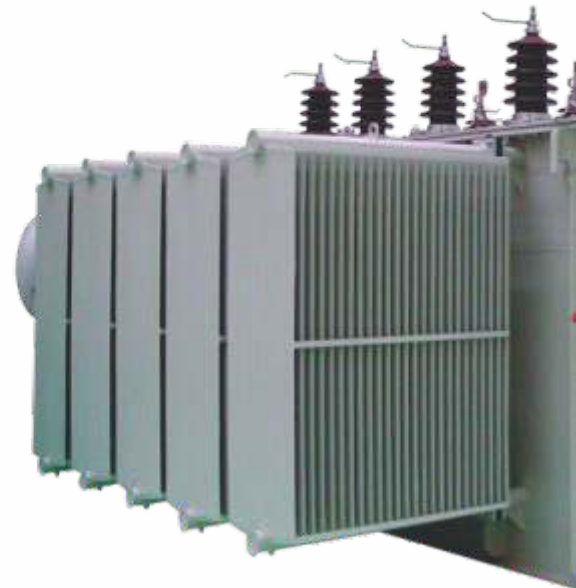
Secondary voltage: 433V, 1.1KV, 11KV or as required

Transformer Oil: Mineral Oil as per IS 335, Ester synthetic oil

Tap changer: Off circuit / On line

No load/ Load losses: As per standards/client specifications

Cooling: ONAN/ONAF/OFAF





Standard fittings with all transformers:

- Filling Device
- Drain plug
- Oil level indicator
- Lifting lugs
- Earthing terminal
- Rating and diagram plate
- Primary bushing
- Cable terminations
- HV/LV Cable box /as Required
- Drain valve
- Conservator and silica gel breather
- Pressure relief device
- Bucholz Relay



THREE PHASE TRANSFORMERS

Upto and including 2500 KVA
(Non sealed and sealed type)

Technical specifications:

Rating: 6.3 KVA to 2500 KVA

Applicable standards: IS 1180 : 2014

Cooling: ONAN

Insulating fluid: Mineral oil as per IS335/Ester oil

Frequency: 50 Hz

Polarity: As specified

Primary voltage: upto 33 KV

Secondary voltage: 433,415V (other voltages as required)

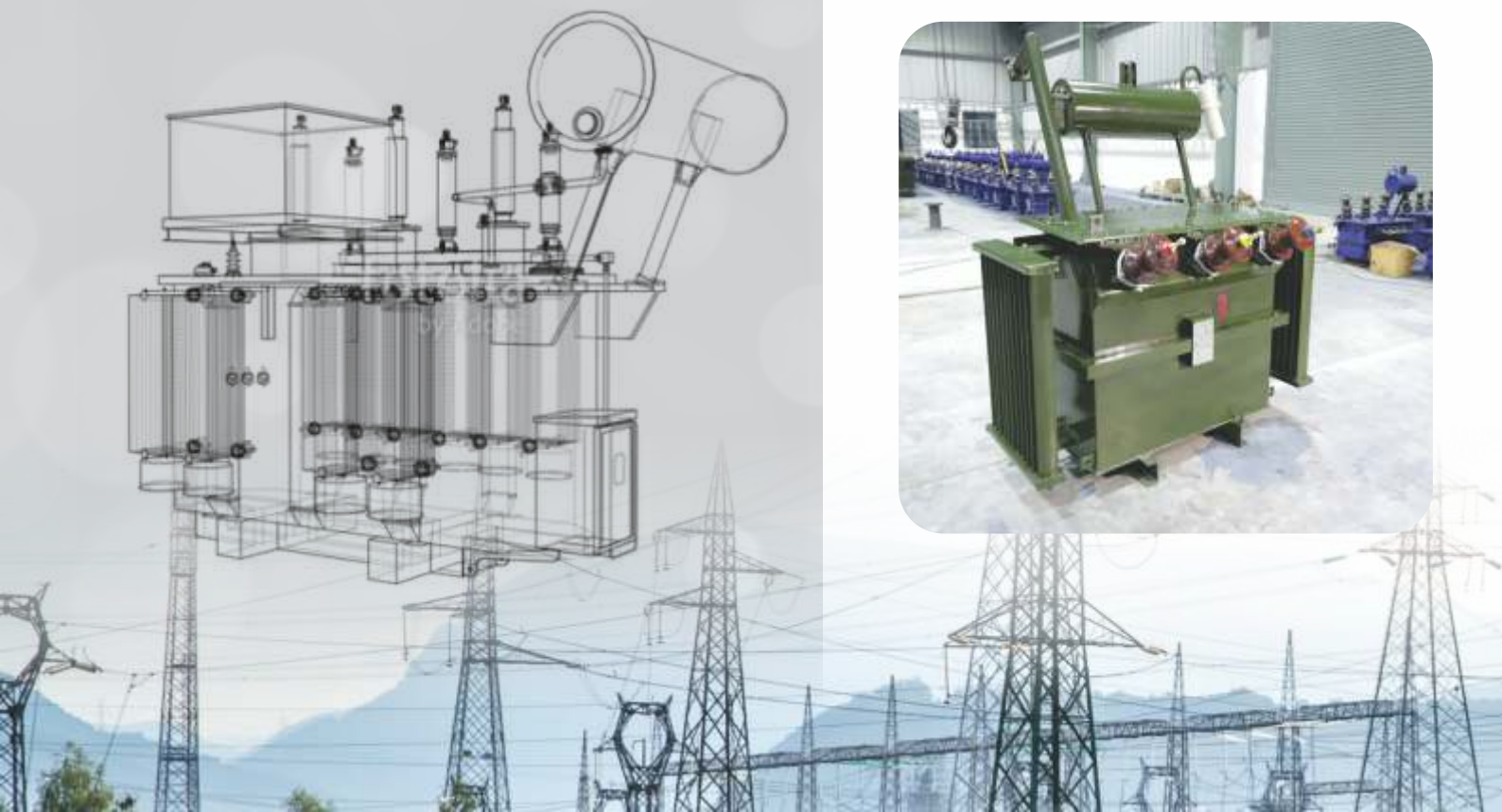
Winding material: Copper/ Aluminium

Core: CRGO/ZDKH/Amorphous

BIS : Level 2,3,4,5,6

BEE : Star 1,2,3,4,5

Capacity : 1000-1500 transformer per month



SINGLE PHASE DISTRIBUTION TRANSFORMERS

upto and including 100 KVA (Sealed type)

Technical specifications:

Ratings: 5 KVA to 100 KVA

Applicable standards: IS 1180:2014

Cooling: ONAN

Core: CRGO/Amorphous

Insulating fluid: Mineral oil or IS: 335/Ester oil

Frequency: 50Hz

Polarity: As specified

Primary Voltage: Upto 33 KV Class

Secondary Voltage: 230/240/250V/ As specified

Winding material: Copper/Aluminium

Side protection: MCCB / internal breaker/As specified

BIS: LEVEL 2,3,4,5 & 6

Features:

Robust construction having excellent short circuit and lightning impulse withstand capabilities.

Ability to meet customized design and specification demands.

Design available in both stack & wound core.

Round or rectangular tank design available.

Customized antitheft safeguards.

All optional fitting as per customer's requirement available.

Capacity 3000 transformers per month.

Facility equipped to carry out all routine tests as per IS1180:2014.

In house designing available for 5 star/level 6 transformers.



VACUUM PRESSURE IMPREGNATED (VPI) DRY TYPE TRANSFORMERS

10 KVA to 1000 KVA



DRY TYPE TRANSFORMERS: THREE PHASE 11/0.433 KV

EPOXY RESIN CAST DRY TYPE

TRANSFORMERS 25 KVA to 1000 KVA



**Suitable for Indoor
Installation and Residential
Buildings Customised
as per Customer needs in
accordance with IS**

Advantages of Dry Type Transformers :

- Naturally Air Cooled
- Energy Efficient Designs
- Suitable for Indoor Application
- Space Saving
- Environmentally Preferable
- Low Maintenance
- Increased Safety Factor
- Low Fire Hazard
- Increased Safety Factor



Selection of CTPT unit

How to determine CTPT ratio to be installed? CTPT ratio is determined based on total sanctioned load. Three phase power is $\sqrt{3} \times V \times I$ = Total sanctioned load. V is 11KV. So if total sanctioned load is 160HP which is equal to approx

120KW, then $I = \frac{120KW}{\sqrt{3} \times 11KV} = 6.3A$ which means a 7.5/5A or 10/5A CTPT will be required. Usually consumer metering

CTPT sets are available in ratios 5/5A, 7.5/5A, 10/5A, 15/5A, 20/5A, 25/5A, 30/5A, 40/5A and 50/5A

CURRENT TRANSFORMERS & VOLTAGE TRANSFORMERS, CTPT Combined units

We are manufacturing oil cooled combined CTPT units upto 33 KV, Oil cooled current transformers upto 33KV and oil cooled voltage transformers upto 33KV in our Sitapura, Jaipur unit.

Technical specifications:

Voltage Rating: 11KV/22KV/33KV

Applicable standards: IS 2705:1992, IS 3156 :1992(or any equivalent standard)

Primary current: upto 3200A

Secondary current: 1A/5A

Accuracy class: From 0.1 upto 3 including 0.2S & 0.5S

Insulation level: As per IS2705:1992, IS 3156:1992

Winding material: SEM Copper

Rated continuous Thermal current: 1.25 times rated primary current

Core: Nano crystalline/ZDKH/CRGO toroidal

STC Rating: As per specification

Features:

- Advanced facility available, separate drying oven for CTPT sets, hydraulic lift to carry goods, air conditioned room for coil winding and a separate store to keep raw materials for instrument transformers.
- Separate testing facility to carry out all routine tests as per IS2705:1992, IS3156:1992
- Oil filling under vacuum
- In house fabrication of tanks
- Metering, Protection & Special class CT available, Metering & Protection VT available
- Ability to meet customized design and specification demands
- Live/Dead tank design available for current transformer



SHRI KRSNA URJA PROJECT PVT. LTD.

Products:

Galvanized Steel Structures
Transmission Towers
Substation Structures
Solar Module Mounting Structures
Jobwork Galvanizing
Railway Structures
Earthing Flats & Rods

Customers:



SOLAR ROOFTOP PROJECTS



GALVANIZING JOBWORK



SOLAR CARPORT STRUCTURE



TRANSMISSION LINE TOWERS 220KV

PLEASE CONTACT REGARDING ENQUIRY FOR ABOVE PRODUCTS.

■ Jaiprakash Rajawat ☎ 8559861166 ✉ rajawat@shrikrna.com

STRENGTHS

- ★ Great Quality
- ★ Timely delivery
- ★ Adherence to specs
- ★ Timely after sales service
- ★ Keeping to our commitments

CLIENTS



CLIENTS, ACCREDITATIONS



CM/L : 8400029213





SHRI KRSNA SUDARSHAN URJA

Estd : 1929

Building No. 118, MI Road, Jaipur, Rajasthan, 302001

For transformers contact:

+91-9829459533, +91-9829536807

blc@shrikrnsa.com, kartik@shrikrnsa.com

For Galvanized structure & transmission towers contact:

+91-8559861166

rajawat@shrikrnsa.com

www.shrikrnsa.com